



124 N. ELDEN STREET, FLAGSTAFF | ARIZONA

## 4,000 SF Standalone Office Building

*This premier two-story standalone office building presents an exceptional leasing opportunity in downtown Flagstaff. The property offers flexibility with the option to lease the entire 4,000 SF or divide into two suites of 1,000 and 3,000 SF. Available for immediate occupancy, this professional office space features panoramic city views, dedicated parking, and individual climate control systems. The building's prime location provides unparalleled visibility and convenience within Flagstaff's thriving commercial district.*

Lease  
\$22/SF  
NNN

Contact:

Becki Whitehead  
Agent  
928 440 5450  
[Becki@KellyandCall.com](mailto:Becki@KellyandCall.com)





## Property Overview

Suite 100: 3,000 SF

Suite 200: 1,000 SF

Full Building: 4,000 SF

This unique downtown opportunity offers convenience, visibility, and flexibility—all in one professional setting. Whether you're expanding your operations, relocating, or launching a new venture, this property positions your business in the heart of Flagstaff's thriving commercial core.

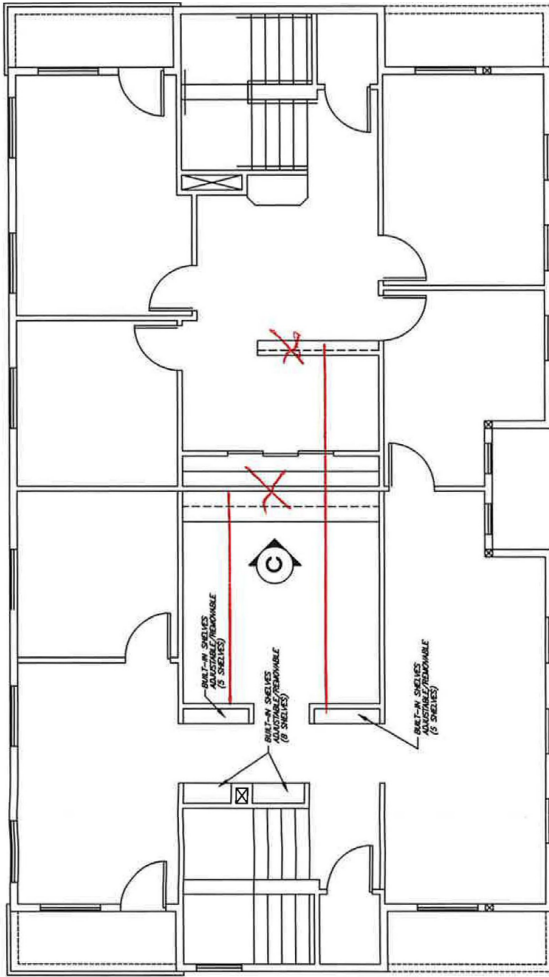
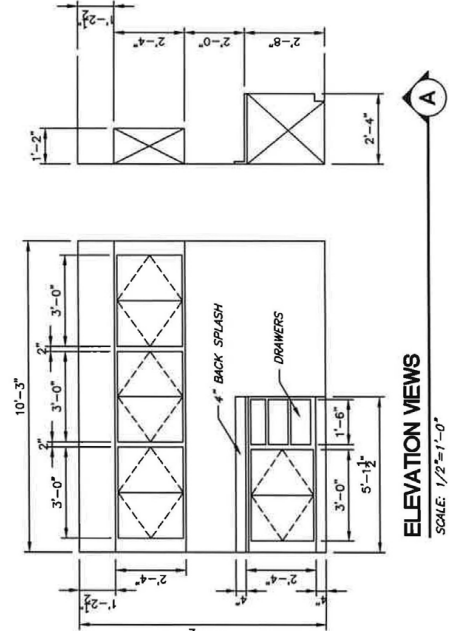
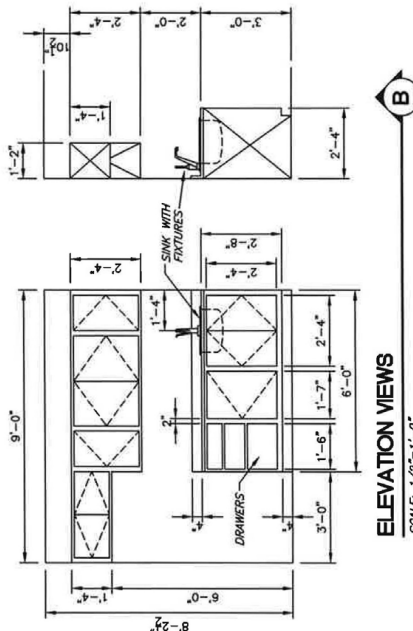
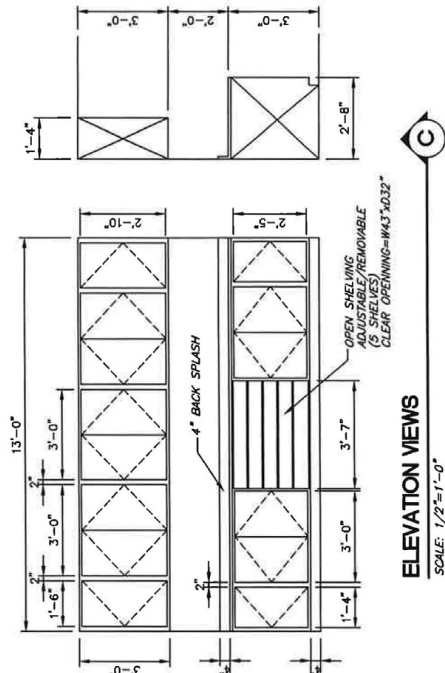
## Key Features

- **Prime Downtown Location** with stunning panoramic city views that enhance the professional atmosphere
- **Quiet and Private Upper Floor** designed for focused work environments and executive operations
- **Individual Climate Control** featuring dedicated AC/heating units with personal thermostats for optimal comfort
- **Open Floor Plan** providing maximum flexibility to customize the space according to your business requirements
- **Convenient Restroom Facilities** located on the first floor and accessible to both suites when divided
- **Exceptional Parking** including 13 private on-site spaces plus abundant street parking for clients and employees
- **Immediate Availability**

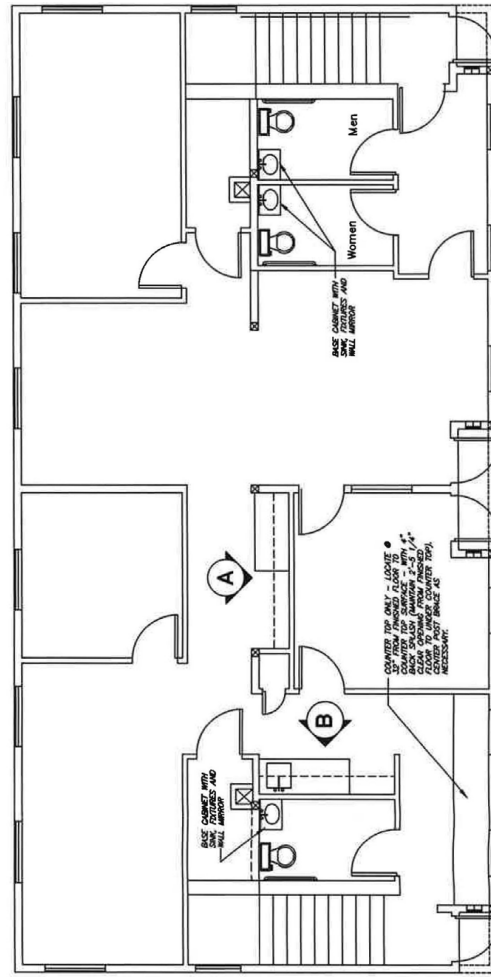


## Schedule Your Private Tour

Contact us today to arrange a personalized showing and discover how this exceptional office space can enhance your business operations. This unique downtown opportunity will not remain available long in Flagstaff's competitive commercial market.



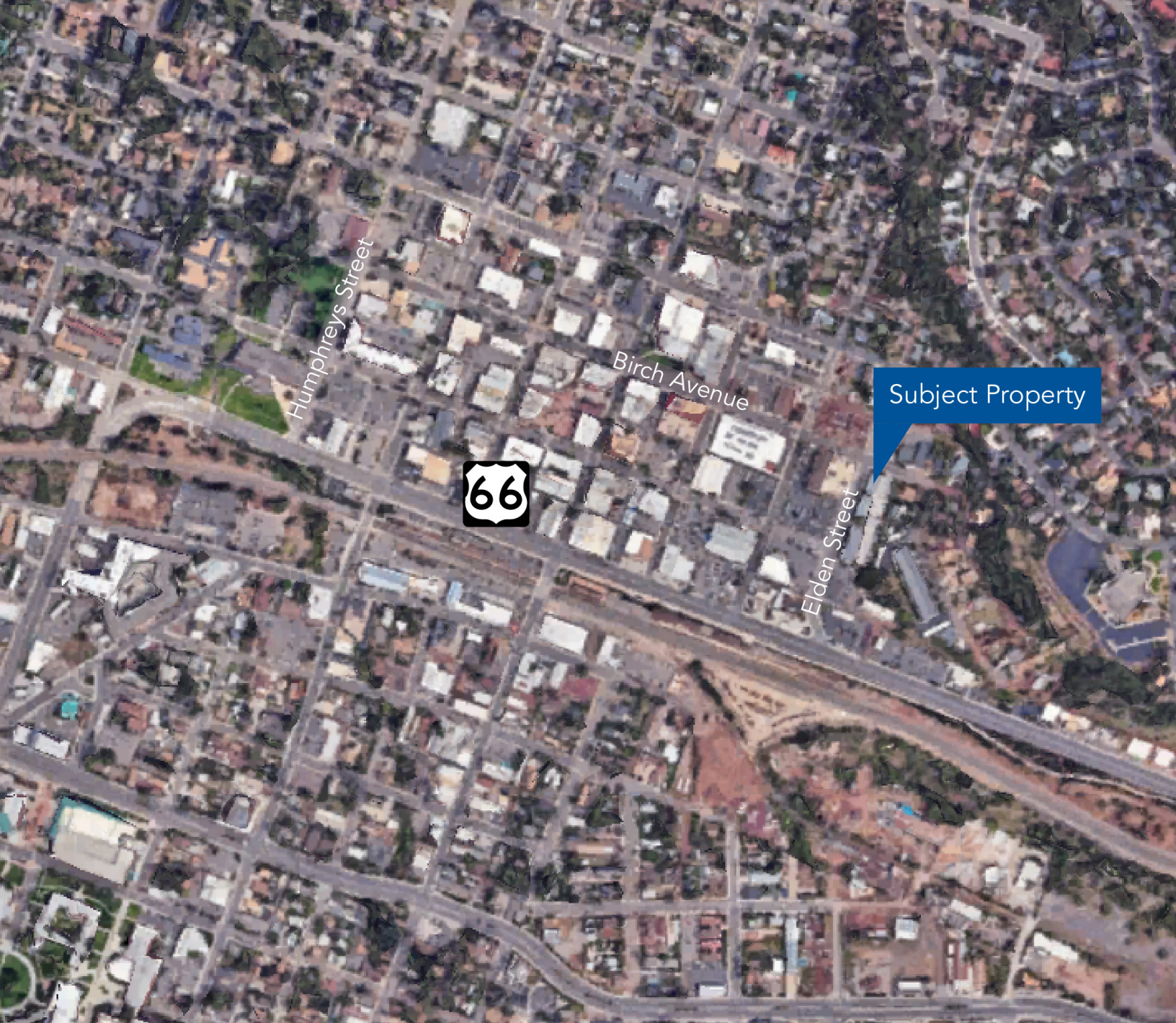
**SECOND FLOOR PLAN**  
SCALE: 1/4"=1'-0"



**FIRST FLOOR PLAN**  
SCALE: 1/4"=1'-0"

**GENERAL NOTES:**  
ALL SHELVING IN CABINETS TO BE ADJUSTABLE AND REMOVABLE. SUPPLY ENOUGH SHELVES TO ACCOMMODATE 2 SHELVES PER CABINET (EXCLUDE SHELVING UNDER SINKS).  
ALL BUILT IN SHELVING TO BE ADJUSTABLE AND REMOVABLE. QUANTITIES AS NOTED ON PLAN.





---

## Contact Us:

Kevin B. Call, CPA

Designated Broker

Principal

Phone: 928 440 5450

[Kevin@KellyandCall.com](mailto:Kevin@KellyandCall.com)

Rob Gerlak

Principal

Phone: 928 440 5450

[Rob@KellyandCall.com](mailto:Rob@KellyandCall.com)

Becki Whitehead

Agent

Phone: 928 440 5450

[Becki@KellyandCall.com](mailto:Becki@KellyandCall.com)



**KELLY & CALL**  
**COMMERCIAL**

Real Estate and Business Brokerage

This document has been prepared by Kelly & Call Commercial for advertising and general information only. Kelly & Call Commercial makes no guarantees, representations or warranties of any kind, expressed or implied, regarding the information including, but not limited to, warranties of content, accuracy and reliability. Any interested party should undertake their own inquiries as to the accuracy of the information. Kelly & Call Commercial excludes unequivocally all inferred or implied terms, conditions and warranties arising out of this document and excludes all liability for loss and damages arising there from. This publication is the copyrighted property of Kelly & Call Commercial and/or its licensor(s). ©2025. All rights reserved.